

The Vision

- ⚓ Our heart is to stay tuned in to what the Spirit of God is doing and to train people accordingly, for the harvest in the last days.
- ⚓ The primary emphasis is for believers to return to signs and wonders as a lifestyle.
- ⚓ Our desire is to create an environment where people can take risks in learning to operate in the supernatural without fear of rejection or failure.
- ⚓ Our determination is that this training center will be a Holy Spirit journey into the realm of the impossible, where believers will learn how to minister with POWER, walking in signs and wonders.

The Team

Tim Ulmer

Director, B.Ed., Dip. Theo., M.DIV.

Over the past 30 years Tim has worked As a school teacher and social worker. Tim's giftings are in the area of teaching and prophetic ministry. Prior to coming to Lighthouse Church, he served as Associate Pastor at Leduc Family Worship Center. He is presently the Associate Pastor at Lighthouse Church and Director of the Lighthouse Supernatural Training Center. His mandate is to equip believers for works of ministry. Tim and his wife Lorraine share the same passion to see the supernatural released with signs and wonders become a lifestyle. They believe that the world deserves an encounter with God and a gospel with power.



Krysta Koppel

Instructor, B.Ed.

Krysta will lead the SOZO program. She has taught a combined total of 4 years in Edmonton, Abbotsford, Hobema and Costa Rica. Her ministry experience includes working at Birch Bay Ranch, serving on the leadership teams of Counter Culture Ministries and City Centre Church, and traveling to various locations on missions trips. Recently, Krysta and her husband Tyler completed Fresh Fire's Supernatural Training Centre and served as interns during the 2008 Lakeland Outpouring. Krysta is passionate about equipping and raising up a generation of revivalists who recognize their identity and destiny and are hungry to see God's kingdom released on earth.



For More Information or to Request
an Application, Please Contact:

Lighthouse Church
...the new wine is found in the cluster...
Isa. 63:8

49 Boulder Blvd

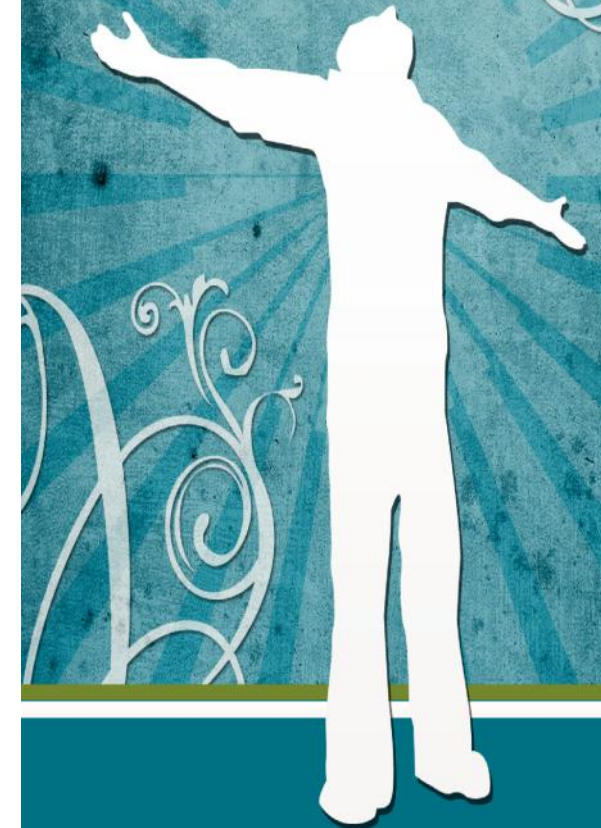
Stony Plain, AB T7Z 1V6

Phone: 780-963-3110 Fax: 780-963-3365

E-mail: lighthouse@lhpc.biz Website: www.lhpc.biz

supernatural equipping for the marketplace

Hungry for
Something
More?



**LIGHTHOUSE
SUPERNATURAL
TRAINING
CENTER**



The Mission

To equip and deploy believers who passionately pursue worldwide transformation and to model a kingdom culture in all the influential gates of society



The Location

Lighthouse Church
49 Boulder Blvd
Stony Plain, AB T7Z 1V6



The Experience

Students will be equipped in the Word and in the Supernatural, including the prophetic, healing, miracles and signs and wonders. Individual mentoring and life skills training will also be part of the experience.

Students will minister at Lighthouse Church, in the community, and on local outreaches.

Opportunity to be part of a travelling ministry team is available. The cost for the trips are separate from tuition.

The Director, Tim Ulmer will be the main facilitator. Conference speakers will occasionally be utilized in the school.

Available to anyone age 17-80 who burn for God. *(Must have completed High School)*

The Curriculum

A DVD curriculum from Bethel School of Supernatural Ministry (Bill Johnson Ministries) is used.

Examples of topics:

- Gifts of the Spirit
- Bible Study Methods
- Ministering in the Prophetic
- Deliverance Ministry
- Principals of Praise & Worship
- Divine Healing

Students will graduate with a Certificate of Completion.



The Calendar

September 13, 2011 – April 26, 2012
Class times: Tuesday - Wednesday, and Thursday, 6:30-9:30 PM

The Costs

Tuition Costs: \$2500 - includes student manual. The cost of the team ministry trips and additional text books are not included.

\$100 Deposit is due with Application.

Monthly payment options are available
Tuition is non-refundable after Oct. 31, 2011.

Students have a choice of participating in a one or two year program.

Accommodations may be available if required.

